

Transforming the Trent Valley
Partnership Scheme
presents
Our Mini School Pack

Inside are inspirational ideas to use inside and outside the classroom or for children to try at home.

KS2



Aimee L. Booth



The ideas are fun, educational with the aim to help children understand our key topic:
Landscape Evolution

Supported by



Funded by



Our Landscape Partnership Scheme

Transforming the Trent Valley (TTTV) is a National Lottery Heritage Fund supported landscape partnership scheme. Staffordshire Wildlife Trust is the lead partner of an 18 organisation partnership.



We as a scheme are...



Transforming the Landscape



River Valley Connections



Connecting Communities through action



Our Wildchild Project

Under the branch of 'Connecting Communities through Action' is our Wildchild project. Wildchild is about learning through play – bringing children and families closer to nature and discovering their wild places through exploration and fun.

A large part of the Wildchild project is sharing our growing knowledge and understanding of the Trent Valley Landscape with the next generation. We will do this by offering free school visits to heritage sites and educational materials to help connect children to the nature on their doorstep.



Landscape Evolution

Our Programmes

Landscape Evolution

We will consider some historical impacts that have made the Trent Valley what it is today.

Pages	Sections
1:	About Us
2:	Our Programmes
3:	The Romans
4-5:	Woolly Rhino
6:	Vikings
7-9:	Our Stopleveline
10:	Industry



The children's
mini heritage booklet
only contains these
pages.

Other mini packs we offer...



Role of the River

We will explore the role of the river as a wildlife corridor and habitat.



Recreation & Relaxation

We will discover how we can use nature as a vital resource for recreation, wellbeing and enjoyment.

The Romans

Romans are well known for being excellent road builders. Your family and friends have probably driven along the A38 many times.

This road overlaps with an old Roman road. Since the Romans were so good at building roads, the remains can still be found in parts around Burton-on-Trent.



Have you noticed how straight it is?



Challenge!

Build the longest and straightest road you can!



Across a classroom, school grounds, at home or in your garden.

Using natural materials like sticks and stones (or craft materials) to mark your route.

See how long your road can go...

Things to think about:

- What obstacles will get in your way? How could you go round them?
- Building the road using natural materials is amazing but feel free to be creative, use what can you find to make your road!



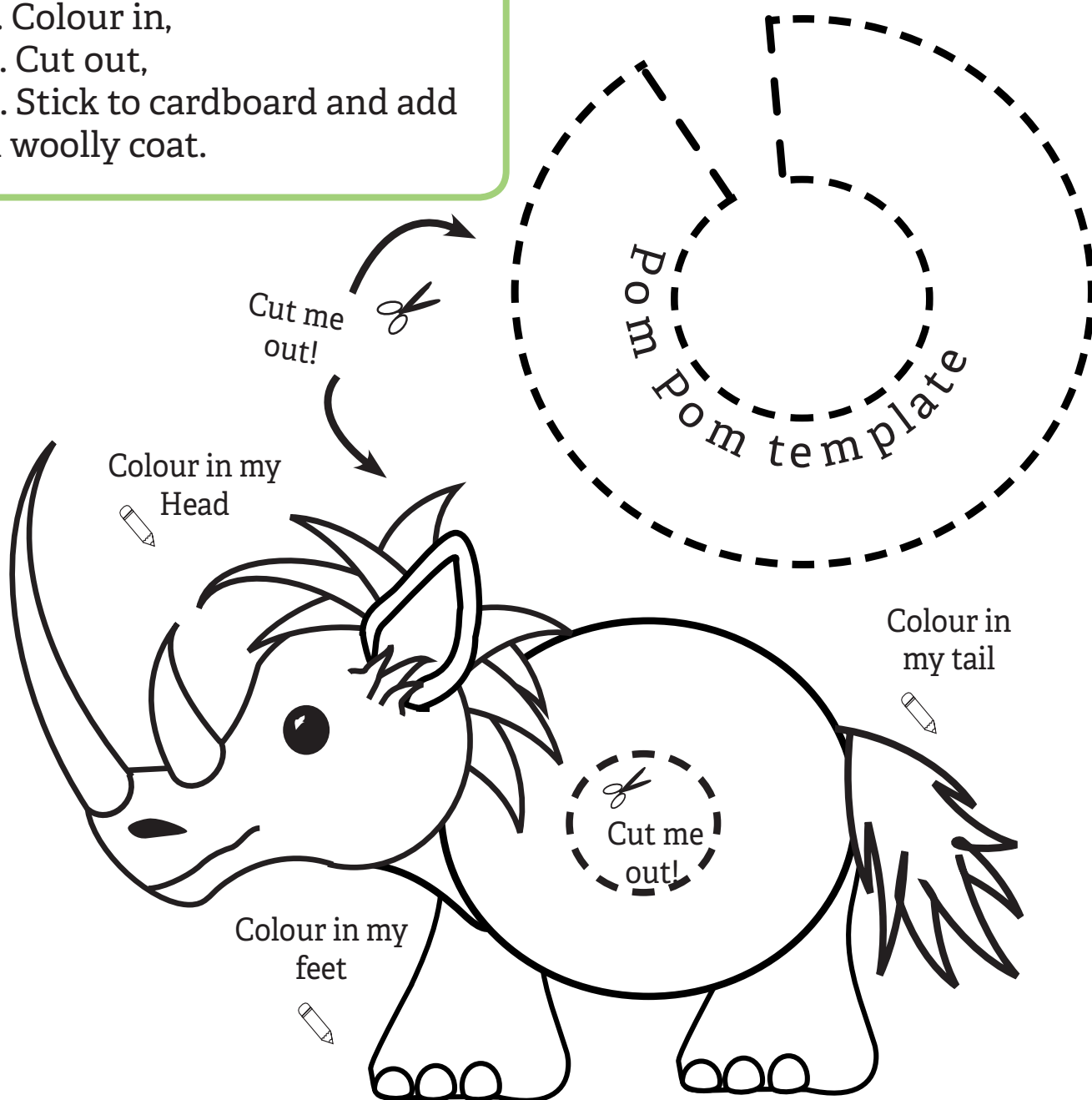
Visit our website's Learn and Discover Page to see how to build a stick-Roman www.thetrentvalley.org.uk/learn.php

Woolly Rhino

In 2002, the remains of a woolly rhino were discovered in a quarry, in Alrewas.

Here is a woolly rhino for you to:

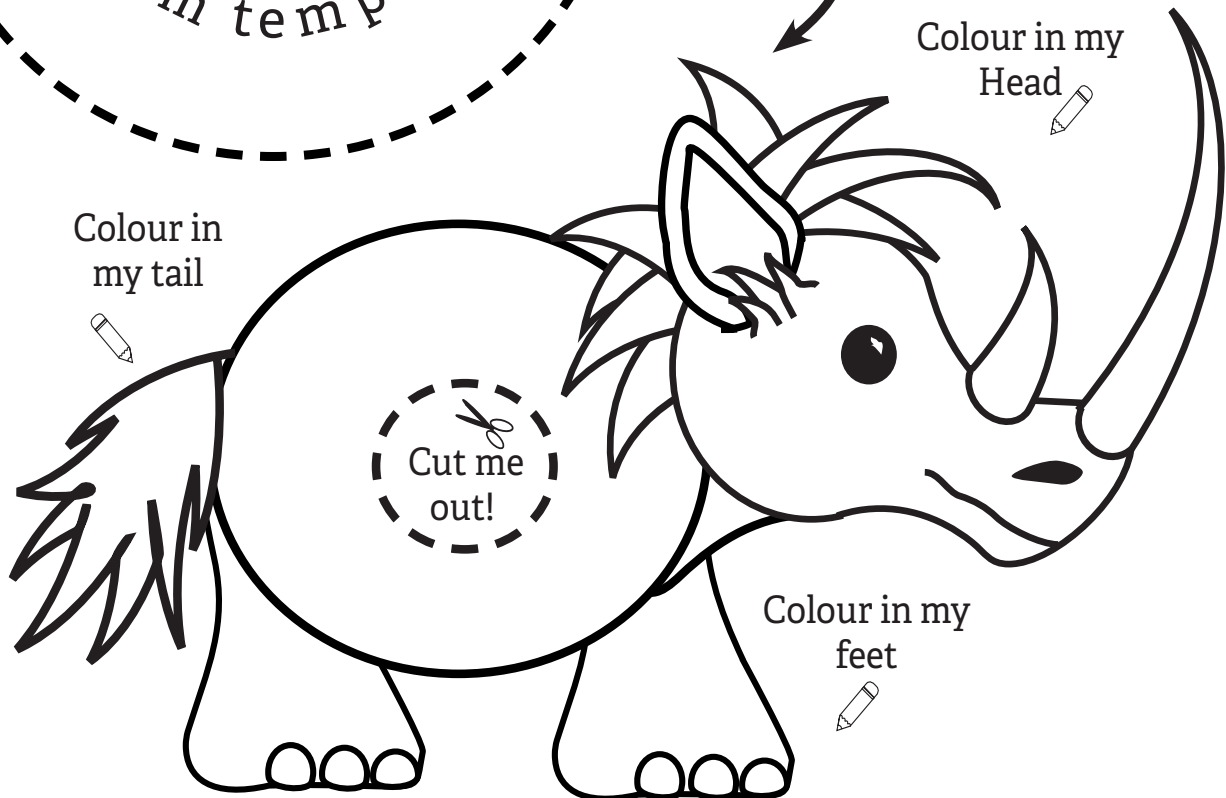
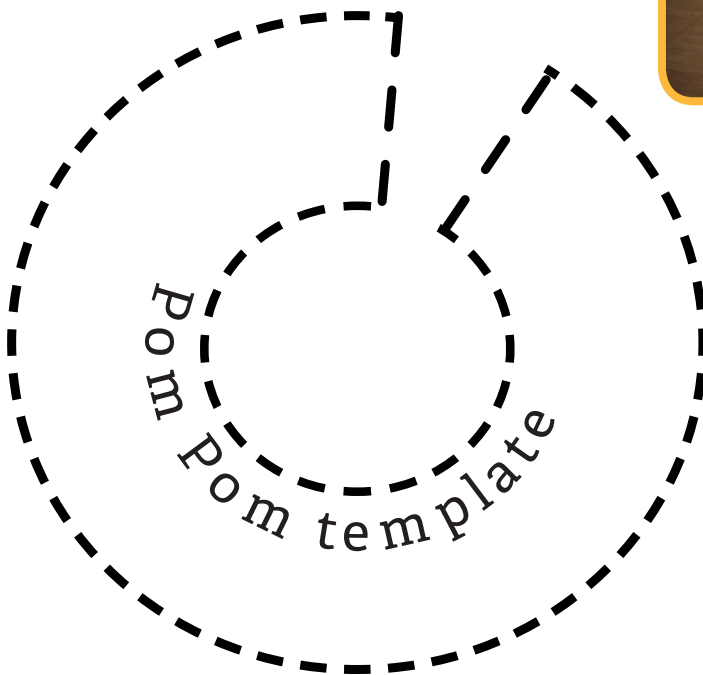
1. Colour in,
2. Cut out,
3. Stick to cardboard and add a woolly coat.





Options for making the woolly coat:

- Make a pom pom.
- Stick wool to the body.
- Wrap wool around the body.



The Vikings

Vikings were brave warriors and explorers, but also knew how to choose a location to settle down in.

A part of our Trent Valley history is that Viking invaders, known as the “Great Heathen Army,” camped for winter at Repton in 873-74. This was part of a long war which ended with Vikings being allowed to settle on land in England.



Make a Viking village

What you will need:

- Sticks,
- Maybe string,
- Suitable space on soil either in a pot/ tray or in your garden.



Step 1. Find a good space to build your village.

Step 2. Build a house.

Step 3. Keep building houses until you have a mini Viking village.

Things to think about:

- How can your Vikings find food?
- Can they get water from a nearby river or lake?
- Is there space to add more houses?
- How do your Vikings travel to different towns?
- Is the settlement sheltered from the weather?
- Is there any natural features (rocks, hills or a river) that will protect them from invaders?



Our Stopleveline

The Pillbox Stopleveline uses the rivers Trent, Tame and Dove as a natural barrier to invaders. Pillboxes were built to guard places where it would be easier for the enemy to cross, such as bridges and shallow parts of the rivers.



The square holes are called
loopholes

This is a
Type 24 Pillbox
shape

Most pillboxes were built in 1940, the early years of the Second World War.

The Pillboxes were places where soldiers could fight an invading enemy, protected from bullets and rifles could shoot from behind a protecting wall.

Mini Pillbox

Using the template on pages 8-9 add some texture patterns to the shape.



Things to think about:

- what material it is made of and what might grow over or around it over time.

You can also cut out and stick your mini pillbox together.

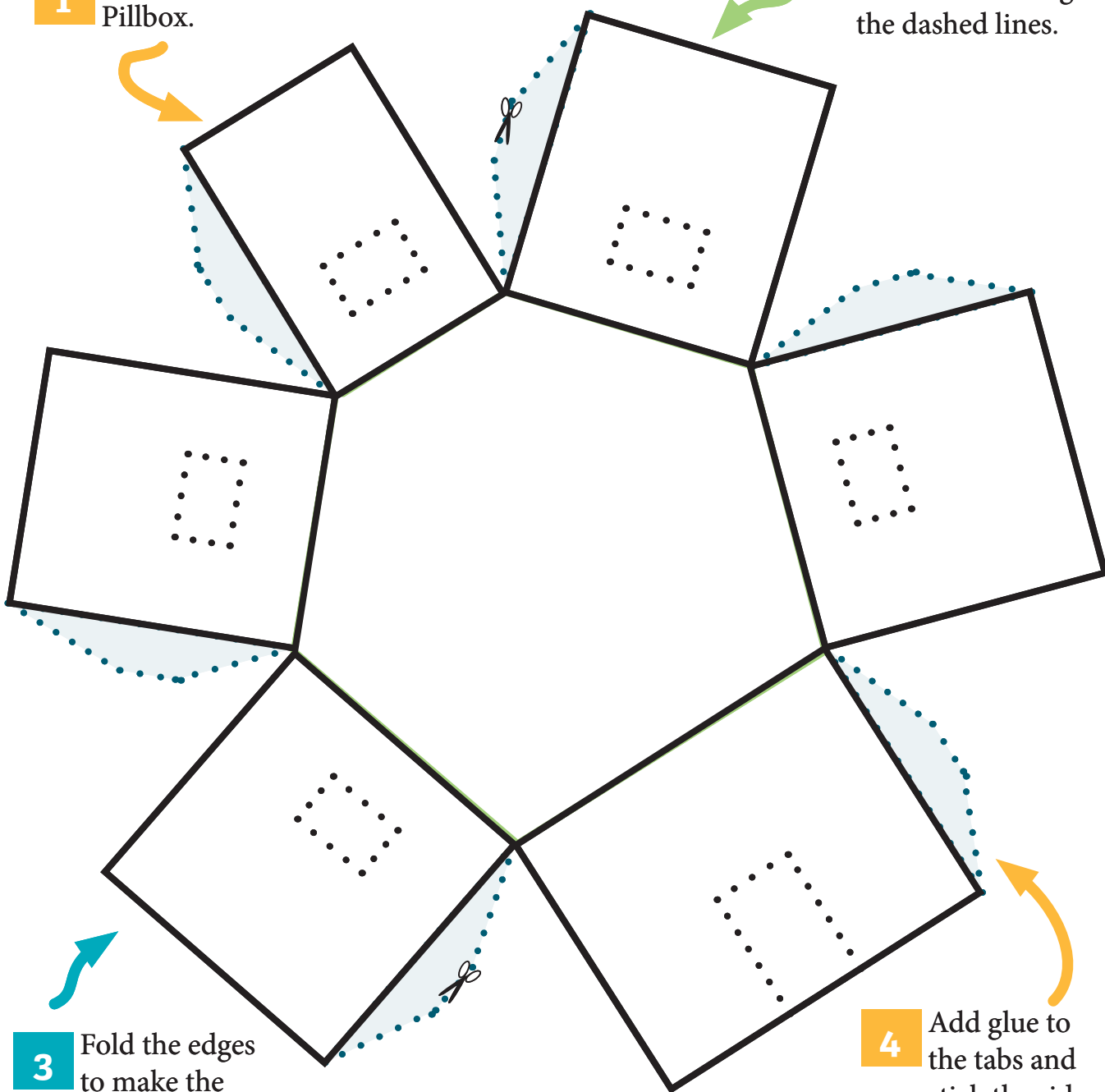


Why not hide the mini pillbox in your garden, house or school grounds. Try to find a place where it is hidden or protected by a natural feature, and then see if someone can discover it!

Decorate a Pillbox

1 Colour in the Pillbox.

2 Cut out the Pillbox and features following the dashed lines.

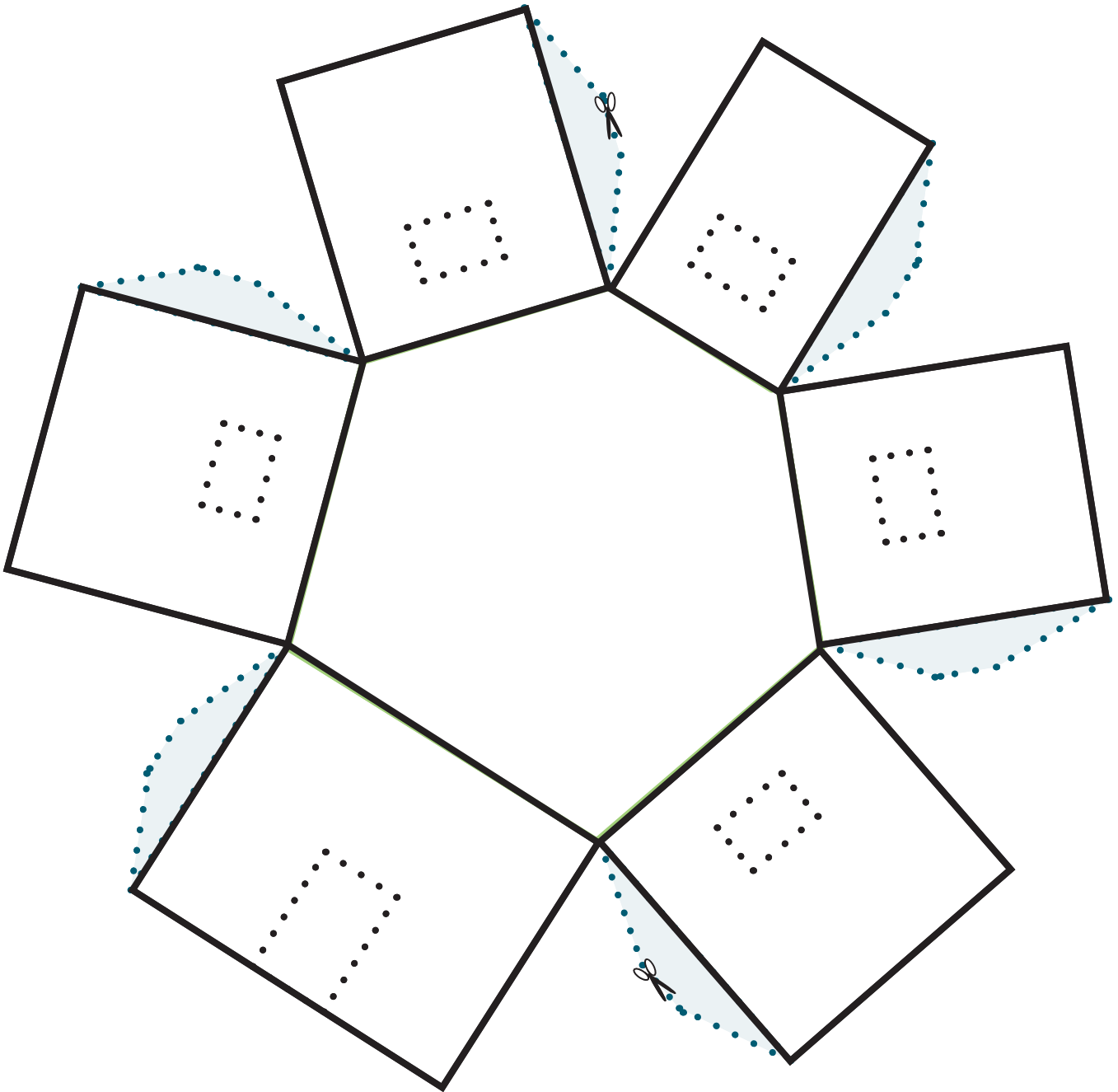


3 Fold the edges to make the Pillbox shape.

4 Add glue to the tabs and stick the sides together.



Decorate a Pillbox



Landscape Evolution

Links to History: a local history study

Industry

The rivers have been used for many years to drive machinery. The Dove has many “Mill Fleams” where water was channelled to water wheels.

Power stations used the river water to drive steam turbines in order to make electricity.

Can you link the industries to their name and connection to the river?



Brewery



Uses the power of the river to make electricity

Power Station



Factory uses an ingredient yeast, from a neighbouring industry

Mill



Uses the river water's minerals in their products

Marmite



Used the river flow to turn machinery

Transforming the

Trent Valley



This mini school pack was funded by
The National Lottery Heritage Fund



Kathryn Kavanagh

Community Grants

We are encouraging community groups to plan and deliver projects within the Transforming the Trent Valley Landscape Partnership Scheme area which will benefit the natural, cultural and built heritage of the area.

To find out more visit: www.thetrentvalley.org.uk/community_grants.php

Written by Kathryn Kavanagh

Acknowledgements

Thanks to the Transforming the Trent Valley Team and Staffordshire Wildlife Trust's People Engagement Team for the insights and inspiration to create this mini pack.



Thank you for using our Landscape Evolution school pack.

We would love to hear your thoughts and experiences using the pack.

Please email tttv@staffs-wildlife.org.uk or your TTTV contact to share feedback.

Interested in finding out about...

- School visits to heritage sites
- Afterschool clubs
- School engagement
- Wildchild events in the holidays

Contact our Wildchild Officer or visit our website.


Keep up to date with us:


@thetrentvalley




Contact Us:


Wildchild Officer - Kathryn Kavanagh

 01889 588150


 k.kavanagh@staffs-wildlife.org.uk

Transforming the Trent Valley Team

 01889 588150

 tttv@staffs-wildlife.org.uk

**Staffordshire Wildlife Trust
(Learning Team)**

 01889 880100

 getwild@staffs-wildlife.org.uk