

Transforming the

# Trent Valley



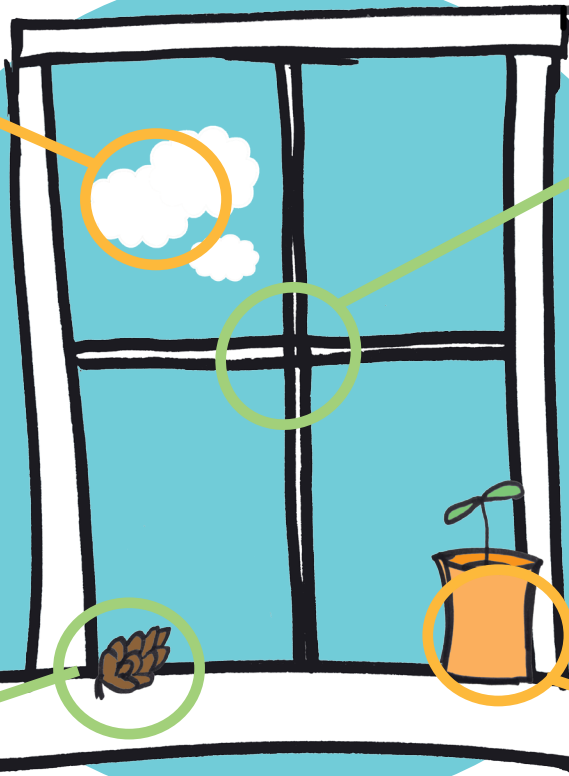
## My Wild Window

We have some little wild activities to connect you to nature on your doorstep from inside your home.

### Cloud spot

Look for shapes in the skies

At sunset look at the sky change colour



Take a moment, open the window slightly, breathe some fresh air and listen to sounds from outside.



### Pinecones

Place a pinecone on your windowsill

Over time it will open and close. Watch carefully over a couple of days to see if there is a pattern with the weather.

### Grow a plant

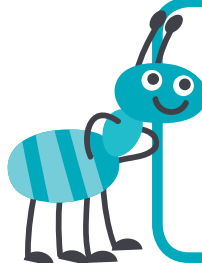
The window is a great place to start growing plants. Add a seed to a pot, water it regularly and watch it grow.







Supported by



**Staffordshire  
Wildlife Trust**



Discover more of our activities on social media    [thetrentvalley](https://www.thetrentvalley.org.uk) or visit our website

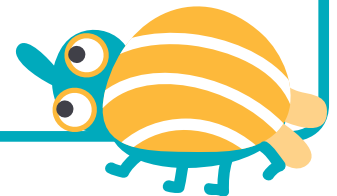
 [www.thetrentvalley.org.uk](https://www.thetrentvalley.org.uk)

Transforming the  
**Trent Valley**



# My Wild Window

Draw your view



Wild Eye Spy

*Lets do an indoor trail!*

*Go to each window in your home and see if you can spot any of the below:*

- Bird flying
- Tree
- Ivy

- Grass
- Bug
- Hedge

- Flowers
- Bird sitting
- Clouds
- Rain



Supported by



# Make your own binoculars

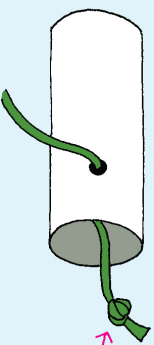
Wildlife  
watch



## You will need

- Two cardboard tubes (you can use toilet roll tubes)
- String
- Paper
- Scissors
- Glue
- Rubber band
- Hole puncher or pen
- Felt tip pens (optional)

- 1 Cut your paper to size, then cover your tubes with glue and wrap the paper around them.
- 2 Using a pen or hole puncher, insert a hole at the side of each tube, about a third of the way down.
- 3 Glue the two tubes together so that the holes are facing the outside.
- 4 Insert string into one of the holes from the outside of the tube. Bring it through the tube and tie a chunky knot. Gently pull the string back from the outside. Repeat on the other side.
- 5 Place a rubber band around the tubes to help the glue set. Leave to dry over night.
- 6 Remove the elastic band and then decorate them with pens!
- 7 Go wildlife detecting!



The knot will stop the string coming back through the hole.

